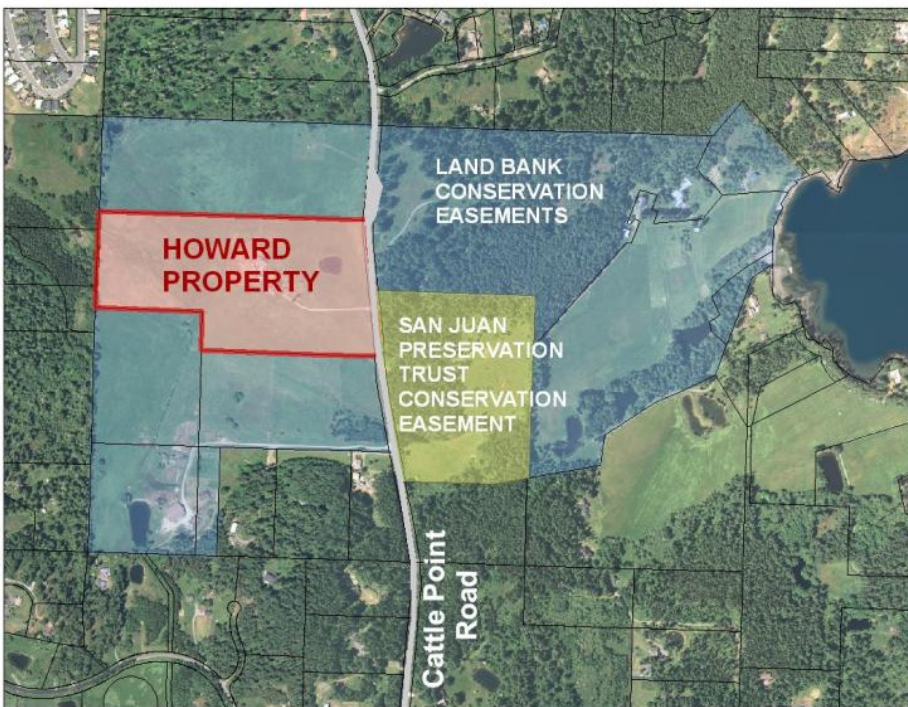




San Juan County News

Land Bank Protects Cattle Point Road Farmland



The conservation easement includes nearly 175 acres of farmland adjacent to Cattle Point Road.

Friday, May 22 2009 - The San Juan County Land Bank has purchased a conservation easement over 27 acres owned by Nate Howard and Elisa Scott-Howard on Cattle Point Road, San Juan Island.

In 2001, the Land Bank initiated efforts to purchase conservation easements over a block of contiguous farmland

on the west side of Cattle Point Road south of Fairway Drive. Two of those easements were completed in 2003, including Heritage Farm. The acquisition of the conservation easement over the Howard property completes protection of this area.

In conjunction with easements on the east side of the road, nearly 175 contiguous acres of farmland, forest and shoreline are protected while remaining in private ownership. This area boasts both raw milk and goat cheese dairies, extensive fields for cattle and sheep grazing, and commercial vegetable and egg production.

“Completing this project has been a goal of the Land Bank for almost a decade,” said Lincoln Bormann, Land Bank Director. “Adding this final piece ensures the

area will remain open forever and allow agriculture to continue there for the foreseeable future.”

About the Land Bank

The Land Bank Program was approved by San Juan County voters in 1990. In 1999, the program was renewed for 12 more years by a nearly 73 percent vote of support. The program is funded by a one percent real estate transfer tax. Paid by those who purchase property in the County, this tax expressly funds preservation of the natural heritage of the San Juan Islands.

Through conservation easements or outright purchases, the Land Bank protects special properties in the County. These include marine shoreline, woodlands, farmland, wetlands, and historic homesteads. The Land Bank has protected over 4,800 acres of important conservation lands throughout the San Juan Islands. The Land Bank may be contacted by email at [**sjlandbank@rockisland.com**](mailto:sjlandbank@rockisland.com) or at **360-378-4402**